





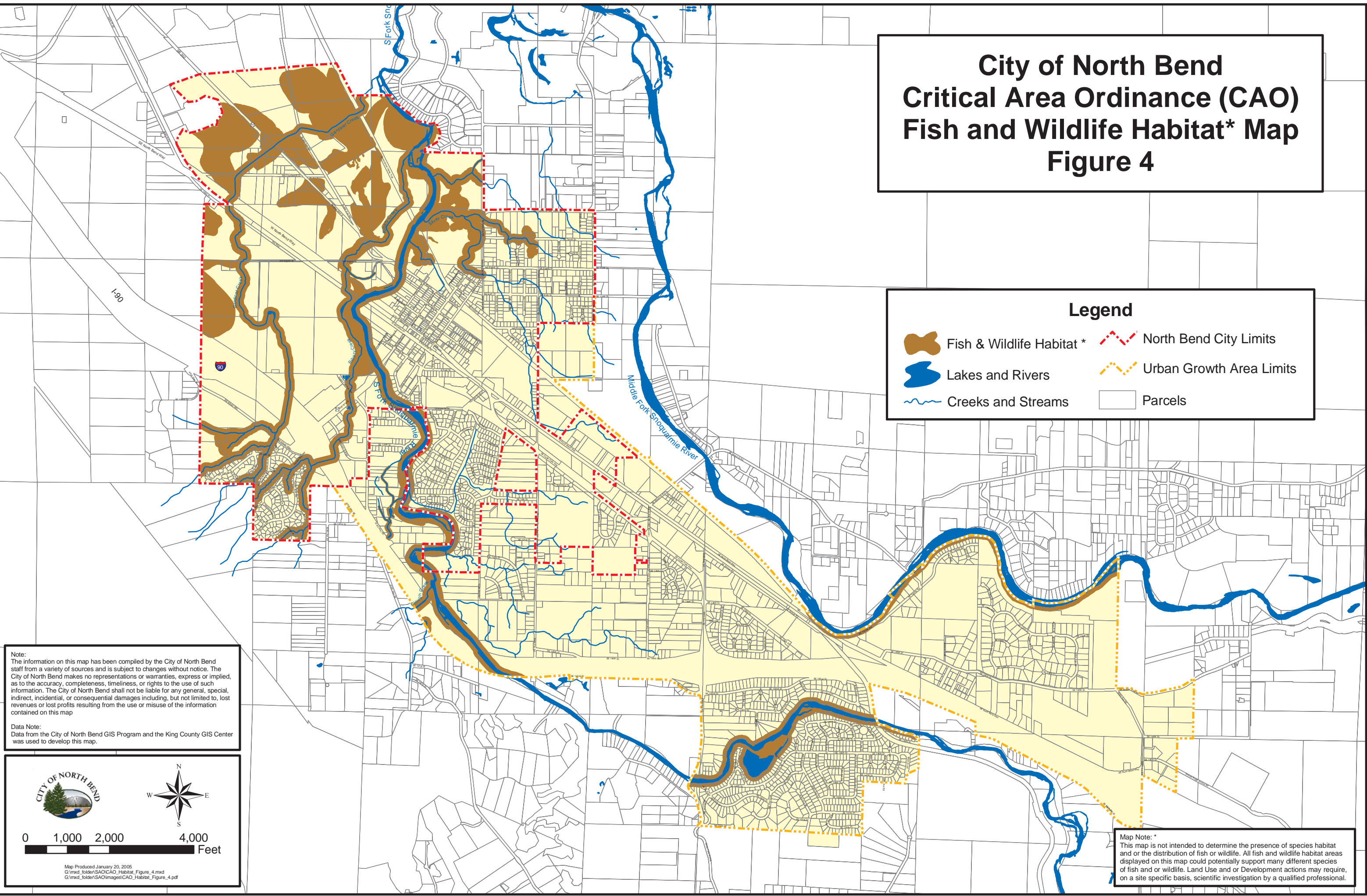


City of North Bend Critical Area Ordinance (CAO) Fish and Wildlife Habitat* Map Figure 4


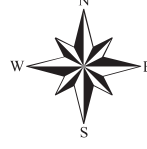
Legend

-  Fish & Wildlife Habitat *
-  Lakes and Rivers
-  Creeks and Streams
-  North Bend City Limits
-  Urban Growth Area Limits
-  Parcels



Note:
The information on this map has been compiled by the City of North Bend staff from a variety of sources and is subject to changes without notice. The City of North Bend makes no representations or warranties, express or implied, as to the accuracy, completeness, timeliness, or rights to the use of such information. The City of North Bend shall not be liable for any general, special, indirect, incidental, or consequential damages including, but not limited to, lost revenues or lost profits resulting from the use or misuse of the information contained on this map.

Data Note:
Data from the City of North Bend GIS Program and the King County GIS Center was used to develop this map.

0 1,000 2,000 4,000 Feet

Map Produced January 20, 2005
G:\mxd_folder\SAO\CAO_Habitat_Figure_4.mxd
G:\mxd_folder\SAO\images\CAO_Habitat_Figure_4.pdf

Map Note: *
This map is not intended to determine the presence of species habitat and or the distribution of fish or wildlife. All fish and wildlife habitat areas displayed on this map could potentially support many different species of fish and or wildlife. Land Use and or Development actions may require, on a site specific basis, scientific investigation by a qualified professional.