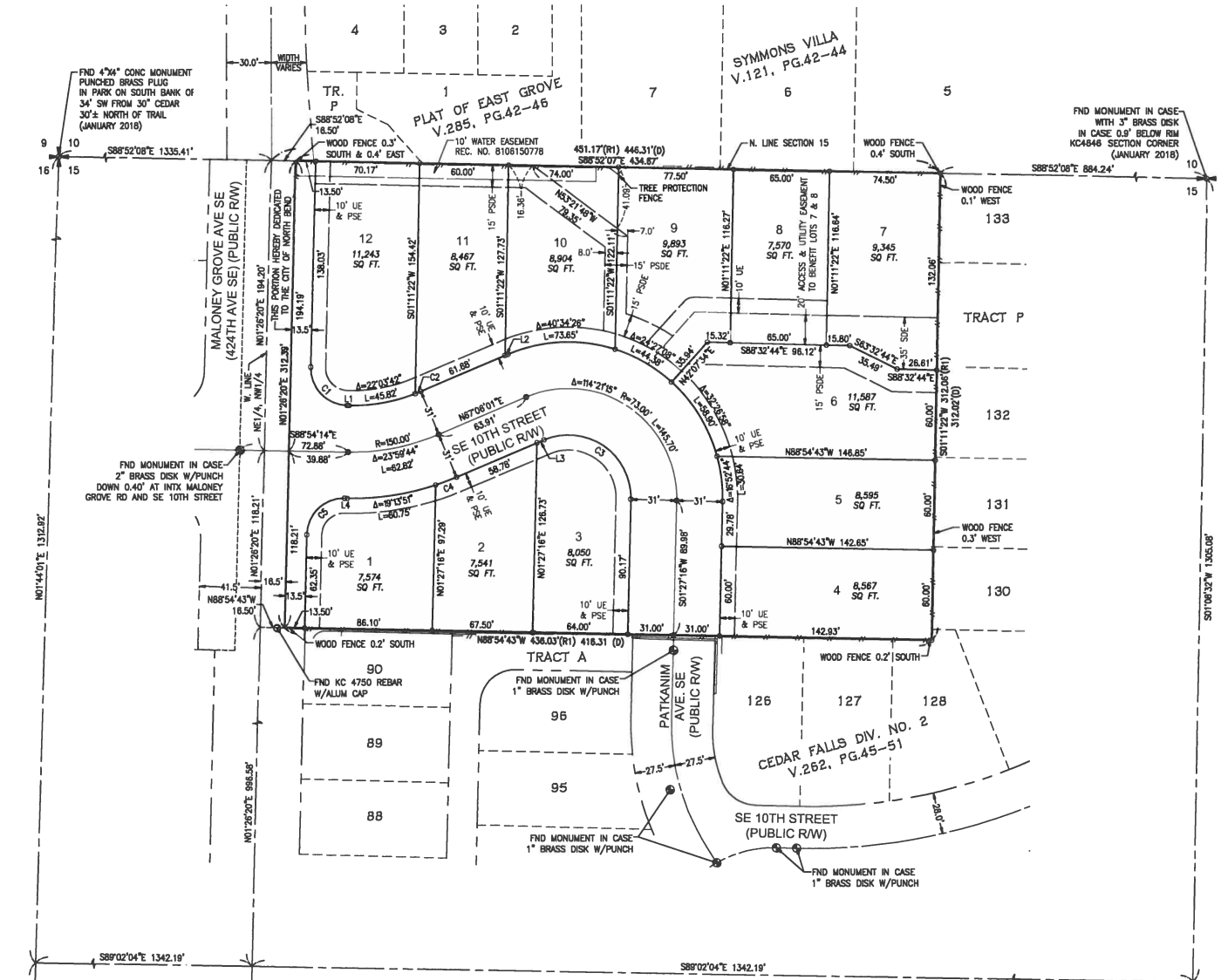




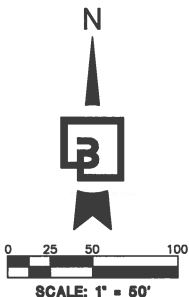


# KANIM GROVE, A PLAT COMMUNITY

BEING A PORTION OF THE NE1/4 OF THE NW1/4  
SECTION 15, T23N-R8E, W.M., CITY OF NORTH BEND, KING COUNTY, WASHINGTON



- LEGEND:**
- ✦ FOUND SECTION CORNER AS NOTED
  - ⊕ FOUND QUARTER CORNER AS NOTED
  - ⊙ FOUND MONUMENT AS NOTED
  - FOUND REBAR/CAP AS NOTED
  - SET MONUMENT IN CASE WITH BRASS DISK STAMPED "BOE 40016" UPON COMPLETION OF CONSTRUCTION
  - SET REBAR/CAP "BOE 40016" SEE SURVEYOR'S NOTE 3 ON SHEET 2
  - UE UTILITY EASEMENT (SEE "EASEMENTS & RESERVATIONS" ON SHEET 2)
  - PSDE PUBLIC STORM DRAINAGE EASEMENT SEE PLAT NOTE 16 ON SHEET 2
  - PSDE PRIVATE STORM DRAINAGE EASEMENT SEE PLAT NOTE 17 ON SHEET 2
  - PSE PUGET SOUND ENERGY EASEMENT REC. NO. 20201215001321



LINE TABLE		CURVE TABLE				
LINE	DIST	CURVE	DELTA	RADIUS	LENGTH	
L1	1.05'	S88°54'14"E	C1	90°20'34"	25.00'	39.42'
L2	2.24'	N67°06'01"E	C2	1°56'02"	119.00'	4.02'
L3	5.14'	N67°06'01"E	C3	114°21'15"	42.00'	83.83'
L4	1.72'	S88°54'14"E	C4	4°45'53"	181.00'	15.05'
			C5	89°39'28"	25.00'	39.12'

JOB NO. 20841



**B** Berghausen Consulting Engineers, Inc.  
18215 72nd Avenue South  
Kent, WA 98032  
425.251.6222 berghausen.com

**NE1/4 OF NW1/4, SEC. 15, T23N-R8E, W.M.**  
**SHEET 3 OF 3**