

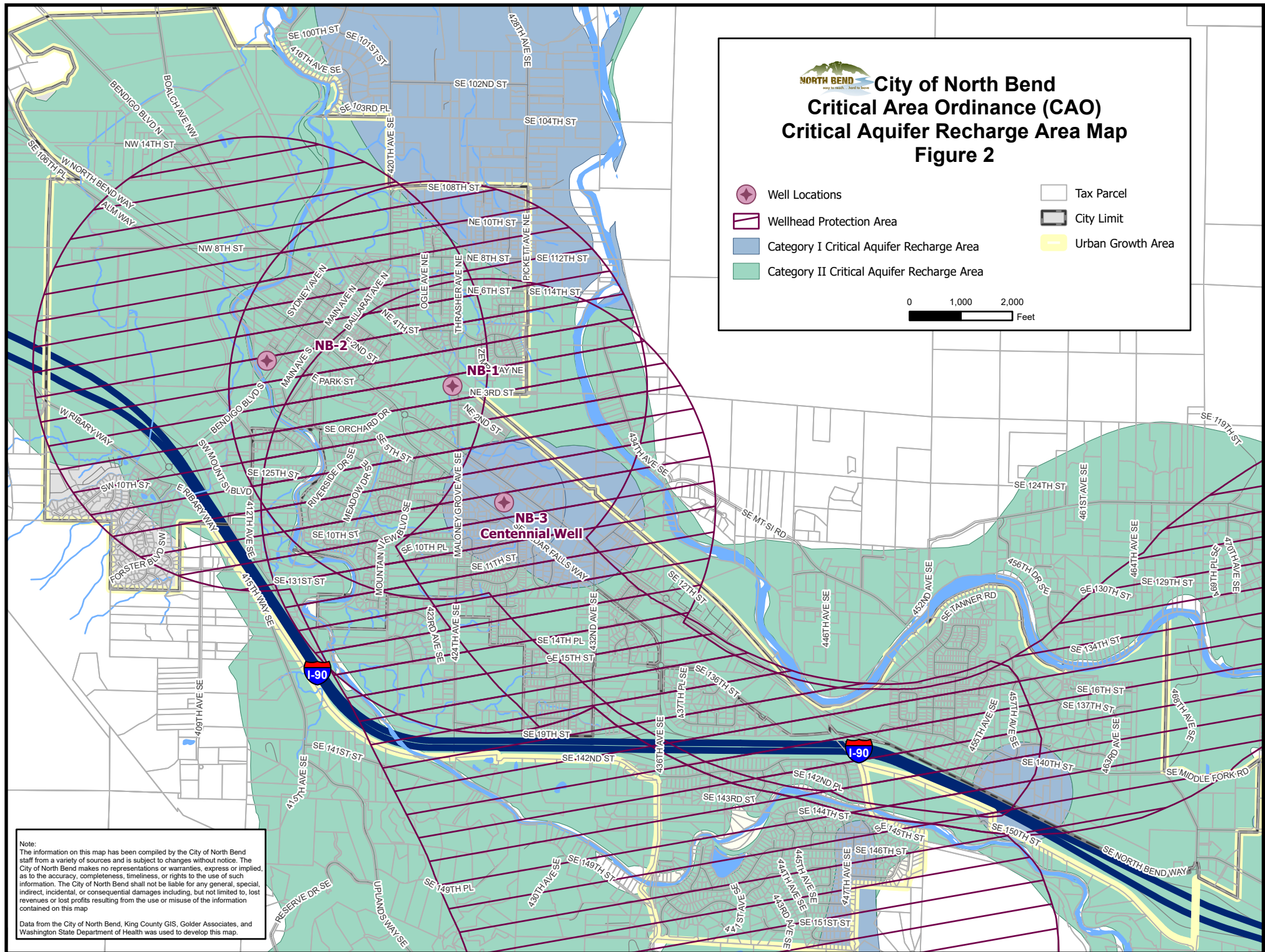
City of North Bend Critical Area Ordinance (CAO) CAO Wetland Area Map Figure 1

- Delineated Wetland Areas identified by City of North Bend
- Wetland Areas identified by King County
- Tax Parcel
- City Limit
- Urban Growth Area

0 1,000 2,000
Feet

Note:
The information on this map is for reference only and does not replace the requirement to perform wetland mapping for development proposals by a qualified professional under the City of North Bend critical area regulations. This information has been compiled by the City of North Bend staff from a variety of sources and is subject to changes without notice. The City of North Bend makes no representations or warranties, express or implied, as to the accuracy, completeness, timeliness, or rights to the use of such information. The City of North Bend shall not be liable for any general, special, indirect, incidental, or consequential damages including, but not limited to, lost revenues or lost profits resulting from the use or misuse of the information contained on this map.

Data Note:
The King County identified Wetland areas were extracted from King County published downloadable GIS Data from <https://gis.kingcounty.opendata.arcgis.com/>





City of North Bend Critical Area Ordinance (CAO) Streams and Other Fish & Wildlife Habitat Areas Map Figure 3

Shorelines Type S Stream

Fish Type F Water

Non-Fish Perennial Type Np Water

Non-Fish Seasonal Type Ns Water

Conveyance Type C Water

Type S Water Buffer

Type F Stream / Water Buffer

Type Np Stream / Water Buffer

Type Ns Stream / Water Buffer

Shorelines of State (rivers over 20 cfs, marine shorelines, and lakes over 20 acres) including periodically inundated areas of their associated wetlands.

All non-shorelines of the state, streams, lakes, ponds, or other impoundments that have a surface area of 0.5 acres or greater and that have fish or fish habitat.

All segments of natural waters within the bankfull width of deined channels that are perennial nonfish habitat streams.

Within a quarter mile of a stream with salmonids. Seasonal, non-fish habitat streams and are not located downstream from any stream reach that is Type Np water.

Non-stream drainages regulated for flood and storm conveyance.

Type S buffers vary - see Chapter 14.20 Shoreline Regulations of the North Bend Municipal Code for guidance.

Developed and vested areas within the Exit 31 & Forster Woods neighborhood are subject to a 25' buffer. See the North Bend Municipal Code for details.

Developed and vested areas within the Silver Creek neighborhood are subject to a 25' buffer. See the North Bend Municipal Code for details.

Type Np Stream

Type F Stream

Type Ns Stream

Type C Stream

Tax Parcel

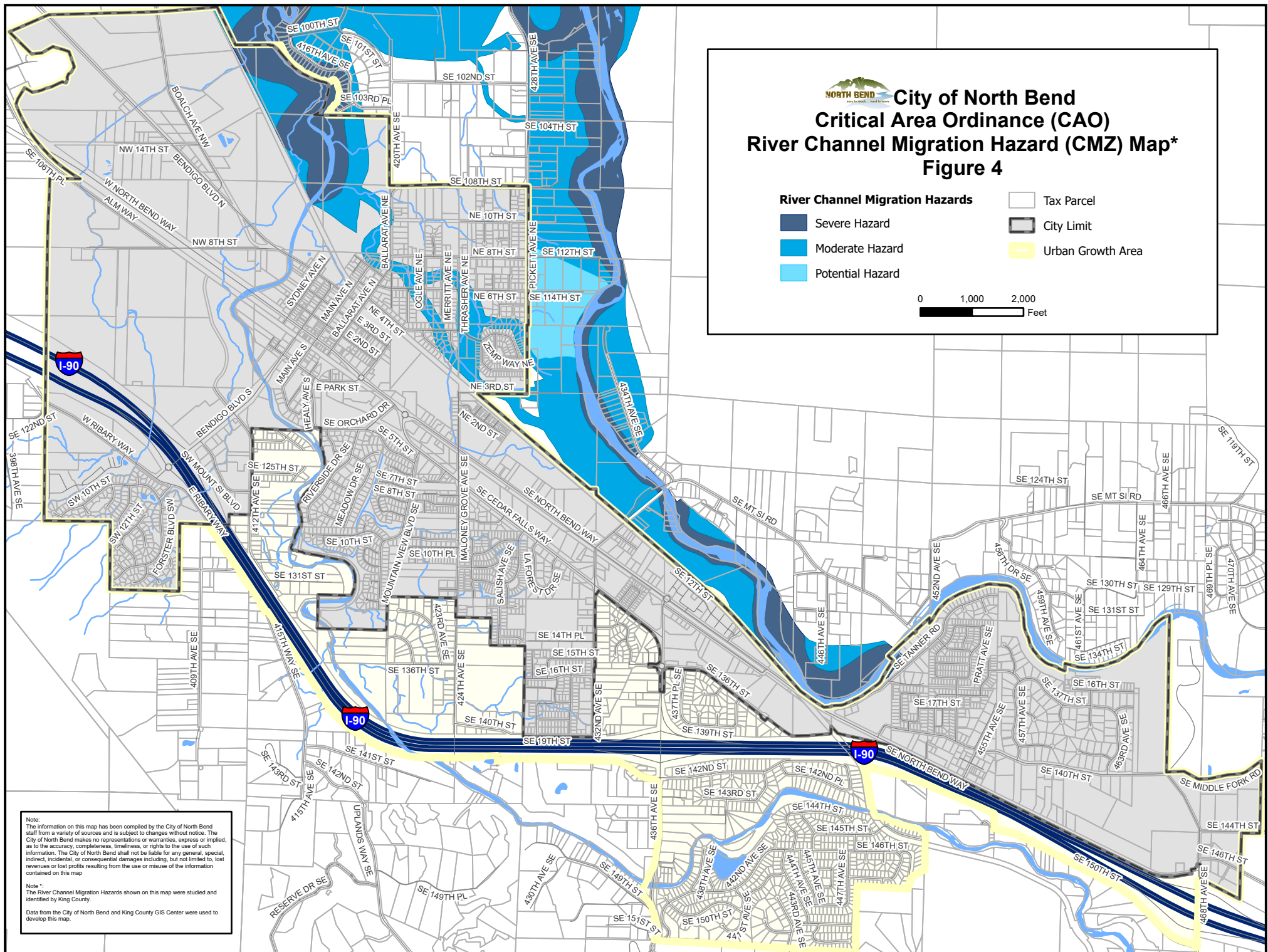
City Limit

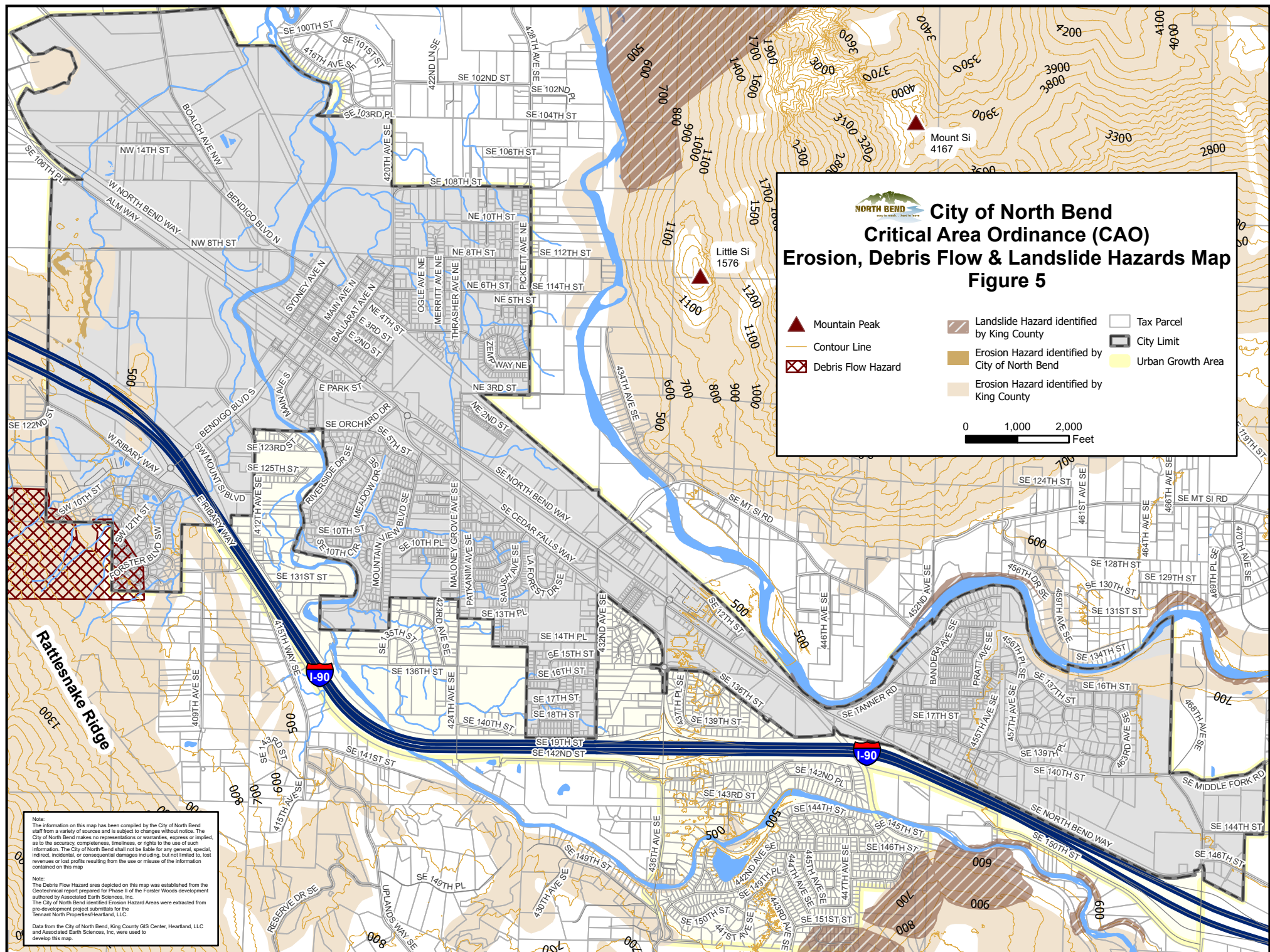
Urban Growth Area

0 1,000 2,000
Feet

Note:
The information on this map has been compiled by the City of North Bend staff from a variety of sources and is subject to changes without notice. The City of North Bend makes no representations or warranties, express or implied, as to the accuracy, completeness, timeliness, or rights to the use of such information. The City of North Bend shall not be liable for any general, special, indirect, incidental, or consequential damages including, but not limited to, lost revenues or lost profits resulting from the use or misuse of the information contained on this map.

Data Note:
Data obtained from the City of North Bend and the King County GIS Center was used to develop this map.







City of North Bend Critical Area Ordinance (CAO) Special Flood Hazard Area (SFHA) Map Figure 6

Special Flood Hazard Areas (SFHA)

Subject to inundation by the 1% Annual Chance Flood Event

- F-AE** Floodway areas in Zone AE.
Flood Depth to 3' (usually sheet flow on sloping terrain); average depths determined. For areas of alluvial fan flooding, velocities also determined.
- AO - 3** Flood Depth to 2' (usually sheet flow on sloping terrain); average depths determined. For areas of alluvial fan flooding, velocities also determined.
- AO - 2** Flood Depth to 1' (usually sheet flow on sloping terrain); average depths determined. For areas of alluvial fan flooding, velocities also determined.
- AO - 1** Flood Depth to 1' (usually sheet flow on sloping terrain); average depths determined. For areas of alluvial fan flooding, velocities also determined.
- AE** Base Flood Elevations (BFE) determined.
- A** No Base Flood Elevations (BFE) determined.
- AH** Flood Depths 1 to 3 feet (usually areas of ponding); Base Flood Elevations determined.

Other Flood Areas

- X** Areas of 0.2% annual chance flood; areas of 1% annual chance flood with average depths of less than 1 foot or with drainage areas less than 1 square mile; and areas protected by levees from 1% annual chance flood.

Other Areas

- X** Areas determined to be outside the 0.2% annual chance floodplain
- X** Areas in which flood hazards are undetermined, but possible.

- Tax Parcel
- City Limit
- Urban Growth Area

0 500 1,000 2,000
Feet

Note:
The information on this map has been compiled by the City of North Bend staff from a variety of sources and is subject to change without notice. The City of North Bend makes no representations or warranties, express or implied, as to the accuracy, completeness, timeliness, or rights to the use of such information. The City of North Bend shall not be liable for any general, special, indirect, incidental, or consequential damages including, but not limited to, lost revenues or lost profits resulting from the use or misuse of the information contained on this map.

Letter of Map Revision History Table

Case Number	Issue Date	Effective Date	Project Name	GIS Update
17-10-1428P	27-Nov-17	13-Apr-18	Mt Si Rd Properties	Yes
17-10-0730P	18-Aug-17	8-Jan-18	River Glen LOMR	Yes