



The King County Sheriff's Office

North Bend City Council Work Session | April 2025





Overview



01

Description of
entity and
proposed services
provided

02

Experience
providing
contracted
services to
communities

03

Response times
to calls for service
(level of service)

04

Ability to respond
to major events

05

Reporting
Community
engagement

06

Cost

01

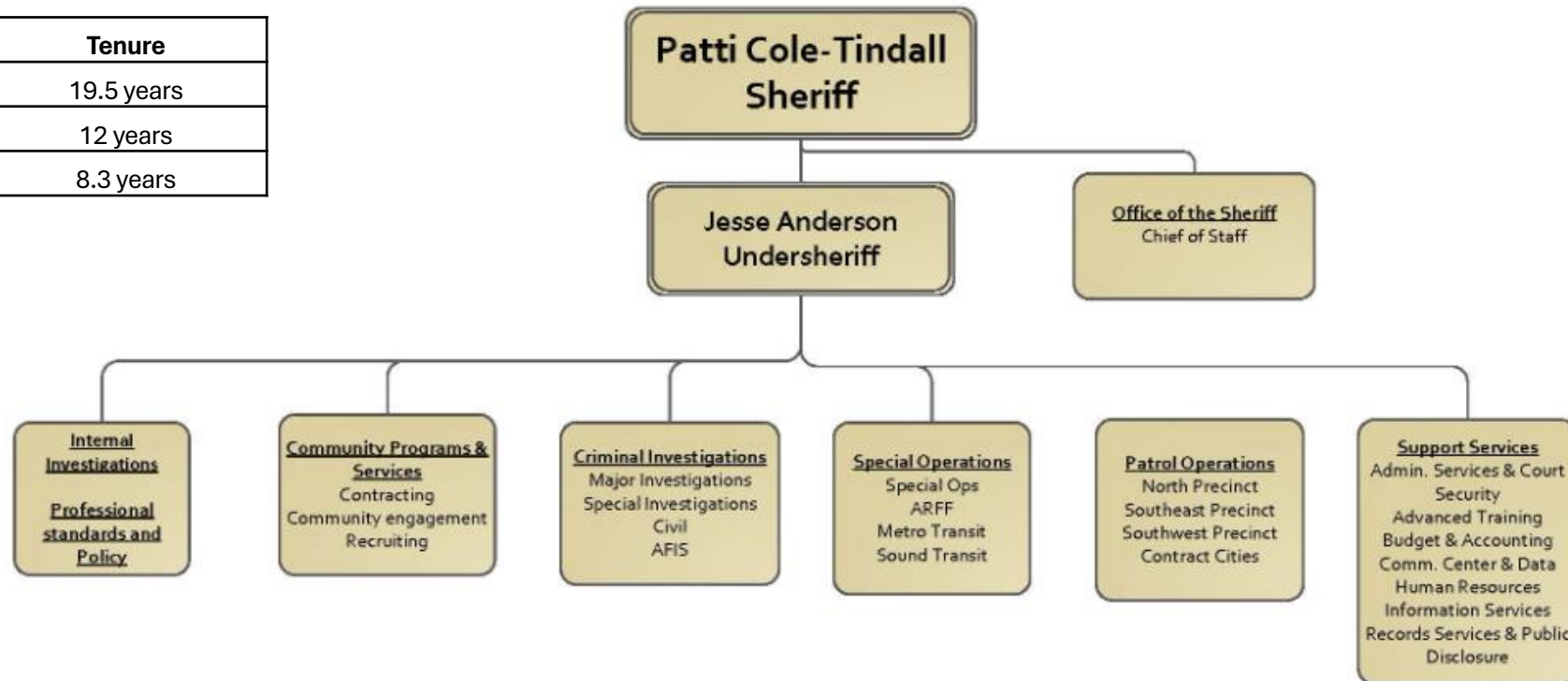
Description of
entity and
proposed services
provided



King County Sheriff's Office

Organizational Chart

Position	Tenure
Leadership (Sgt +)	19.5 years
All Commissioned	12 years
Deputies	8.3 years



01

Description of entity and proposed services provided

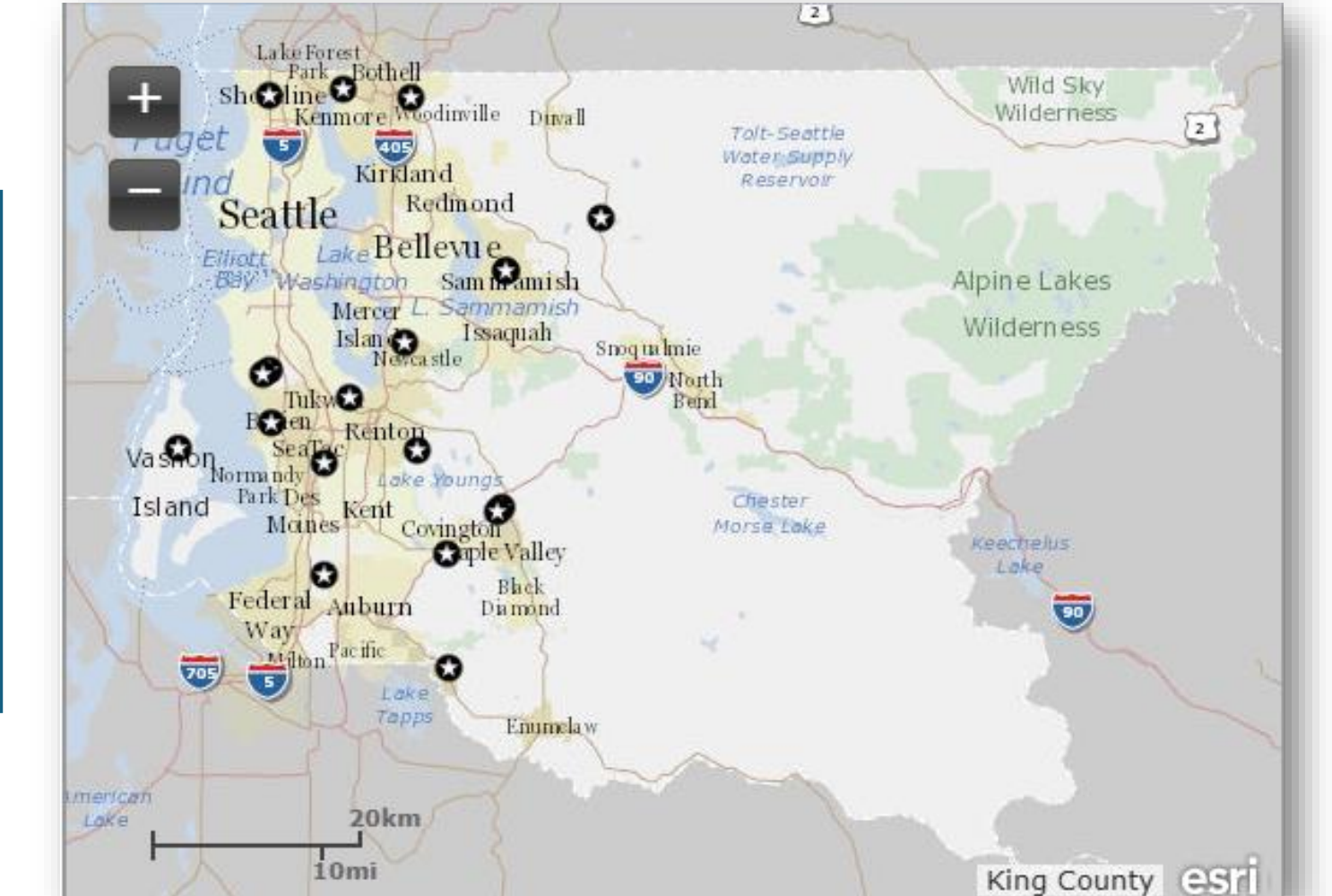
01

Description of entity and proposed services provided



A high-speed patrol boat, likely a Zodiac, is shown from a high angle, moving rapidly through the ocean. The boat is dark-colored with a white cabin and a large, flat deck. It is leaving a massive, white wake behind it, indicating high speed. The water is dark blue, and the sky is a pale blue. The boat's bow is pointed towards the bottom right of the frame.

King County Sheriff's Office
Precincts, Contract Partners
and Storefronts in our
Communities



01

Description of
entity and
proposed services
provided

North Bend Chief of Police ¹²

Detective /
Storefront

North Bend City Hall



Patrol Staffing

A-Squad

Day Shift
0600-1600

Day Shift
0600-1600

Power Shift
1000-2000

Swing Shift
1400-0000

Graveyard
2000-0600

B-Squad

Day Shift
0600-1600

Day Shift
0600-1600

Power Shift
1000-2000

Swing Shift
1400-0000

Graveyard
2000-0600

12
Member Department

Police Chief selected
by City Leadership

Hybrid Detective /
Storefront

Two Officer Coverage
During Core Hours

Squads and Shift Schedules
Determined by Police Chief in
Consultation with City
Leadership



01

Description of
entity and
proposed services
provided



Marine Rescue Dive Unit



Dedicated *with* Support

Commanders, professional staff and off-hour supervision from the Sheriff's Office **North Precinct** will support North Bend's dedicated Police Chief and Patrol Deputies.



[KCSO North
Precinct 2 -
Sammamish](#)

801 228th Ave SE, Suite #202
Sammamish, WA 98075

Phone: [206-263-9133](tel:206-263-9133)

[Precinct Crime Map](#)

02

Experience
providing
contracted
services to
communities

Police Service Partnership



Serving Contract Cities since 1973



02

Experience
providing
contracted
services to
communities



Marine Rescue Dive Unit



52

Years Providing Contract
Police Services

30%

Percentage of King County
Cities Served by the
Sheriff's Office

+\$151_m

Annual Value of Contract
Police Services

16+

Municipal, Transit & Other
Contract Partners

550,000

Community Members
Served by KCSO

1973

North Bend became the
First Contract City for
KCSO

03

Response times
to calls for service
(level of service)



King County Communications Center



Response begins with the King County Sheriff's Office **Communications Center**

90.9%

911-Calls Answered
within NENA's 15-Second
Standard

614,000

Annual calls for service
(911, non-emergency,
text, etc.)

69

Communication
Specialists

**The most important
person you'll never see.**

Meet Kim - one of our many 911 call
takers working at our communications
center.

Whether it be someone in crisis, or
reporting a non-emergency, Kim is
there to answer the call. And while the
person calling will never see who they
are talking to, Kim's compassion and
empathy will truly be felt.

Kim is one of over 1200 people who
chose to serve their communities
through the King County Sheriff's
Office. Will you?

Join us. You belong.

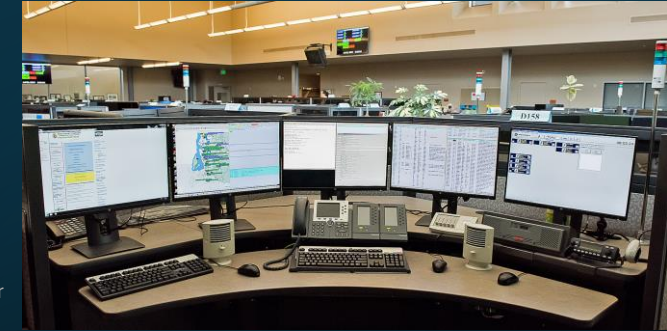


03

Response times
to calls for service
(level of service)



King County Communications Center



The contract cities of **Kenmore** and **Woodinville** are served by the King County Sheriff's Office North Precinct and have **populations, business districts, patrol areas and demographics comparable to North Bend**. These similarities provide us with the most comparable response times (minutes) here:

Priority	2022	2023	2024	3 Year Avg
X Critical	3.68	2.59	3.49	3.28
1 Immediate	7.06	7.11	8.62	7.58
2 Prompt	9.05	9.12	9.57	9.24
3 Routine	18.58	21.88	23.60	21.29

	2022	2023	2024	3 Year Avg
Collisions	9.82	9.95	11.49	10.41



Priority	2022	2023	2024	3 Year Avg
X Critical	3.80	3.27	4.12	3.79
1 Immediate	6.12	6.65	6.19	6.33
2 Prompt	8.04	8.54	8.68	8.43
3 Routine	17.86	19.11	20.26	19.06

	2022	2023	2024	3 Year Avg
Collisions	14.18	11.16	14.88	13.42



04

Ability to respond
to major events



KCSO Crisis Negotiations Teams



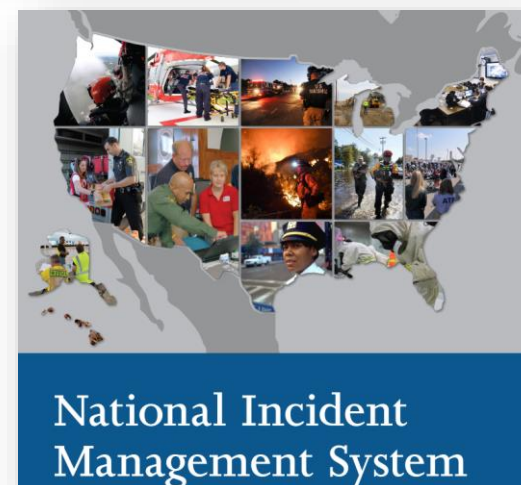
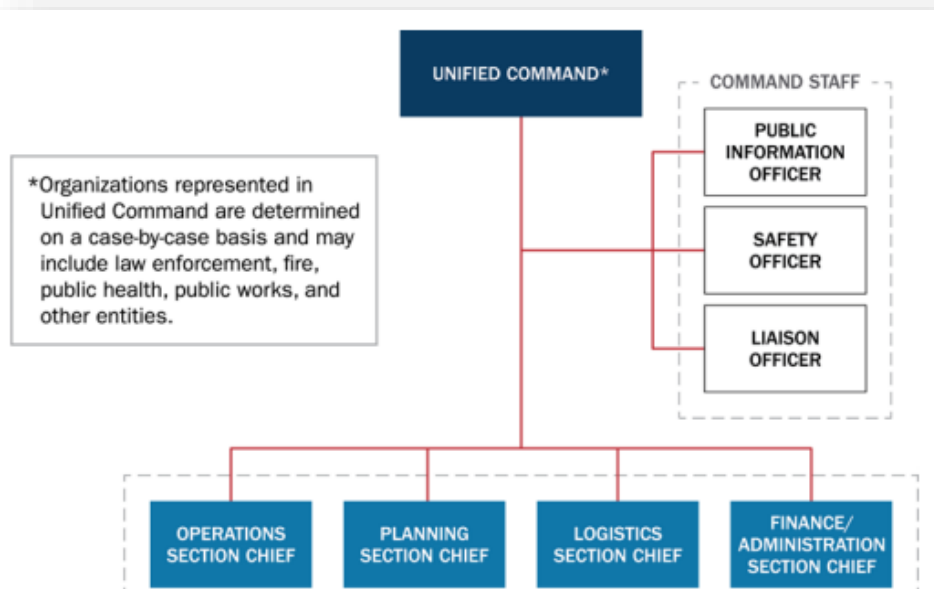
King County Sheriff

General Orders Manual Chapter 11

CRITICAL INCIDENT MANAGEMENT AND CONTINUITY OF OPERATIONS PLAN

11.01.000 INTRODUCTION AND BACKGROUND

Robust Policy,
Training &
Best Practices in
Managing Critical
Incidents

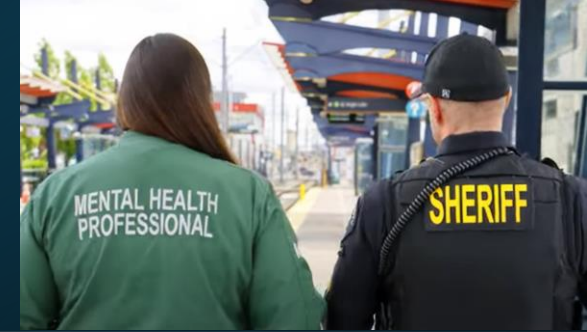


04

Ability to respond
to major events



Therapeutic Response Unit



Tactical, Specialty,
Behavioral Health and
Other
King County
Sheriff's Office
Major Response Units

Contract Cost

Regional – Not Charged

Elective Service

911
Communications
Center

Major Crimes
Unit

Special Assault
Unit

TAC-30
(SWAT)

Crime Analysis
Unit

MARR
(Major Accident
Response and
Reconstruction)

Crisis
Negotiations
Team

Regional
Intelligence
Group

Bomb Disposal
Unit

K9
(Tracking,
Explosive)

Therapeutic
Response Unit

Rapid
Deployment
Force

Search and
Rescue

Air Support Unit

Fire Investigation
Unit

Marine Rescue
Dive Unit

04

Ability to respond
to major events

Hostages rescued and freed, 16-hour standoff with armed man in Issaquah ends in flames

Feb. 16, 2020 at 12:53 pm | Updated Feb. 16, 2020 at 8:50 pm

NEWS

Police surround bunker of North Bend fugitive

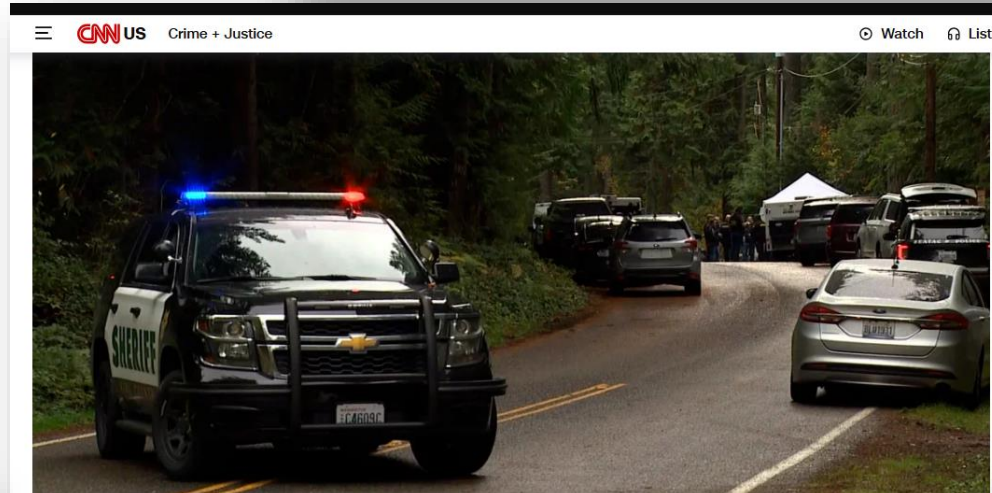
Fri., April 27, 2012



KCSO Fire Training



Experience
and
Resources



Authorities responded to the Fall City, Washington, home on October 21 after receiving 911 calls. KIN

Callouts for King County Sheriff's Crisis Negotiation Team have almost doubled

By David Rose | Updated February 21, 2021 4:59pm PST | Washington's Most Wanted | FOX 13 Seattle |

KCSOAirsupport
@KCSOAirsupport

Just completed a rescue on our way home from training. A hiker on the middle fork trail was seriously ill and needed immediate evacuation. Here are some photos. We had to land on the sandbar to save gas while our medic and rescue techs got our patient ready to evacuate.



5:40 PM · Jun 6, 2023 · 12.6K Views



North Bend shooting victim now in federal custody after discovery of drug lab, explosives



05

Reporting
Community
engagement



Public, Real Time Open Data Dashboards

The screenshot displays the King County Sheriff's Office Data Portal. At the top, there is a banner image of a forested coastline with the text "King County Sheriff's Office Data Portal" and the agency's logo. Below the banner, the section "Featured Dashboards and Links" contains eight dashboard thumbnails arranged in a 2x4 grid. Each thumbnail includes a visual representation of data (maps, charts, or photos) and a title. The dashboards are: "All KCSO CAD - 3 Day Dashboard" (map and call record count of 2798), "All KCSO Mark43 (RMS) Offenses" (map and bar chart), "Burien OverView" (blue line icon), "KC Address/District Search" (aerial photo), "KCSO Transit Offender Search" (photo of police officers), "KCSO Vandalism (Gang) Map (...)" (dark map with red dots), "KCSO Vehicle Theft & Recovery..." (map with red dots and lines), and "Pct 2 Unincorp. CAD Dashboard" (map and call record count of 842).

King County Sheriff's Office Data Portal

Featured Dashboards and Links

- All KCSO CAD - 3 Day Dashboard
- All KCSO Mark43 (RMS) Offenses
- Burien OverView
- KC Address/District Search
- KCSO Transit Offender Search
- KCSO Vandalism (Gang) Map (...)
- KCSO Vehicle Theft & Recovery...
- Pct 2 Unincorp. CAD Dashboard

05

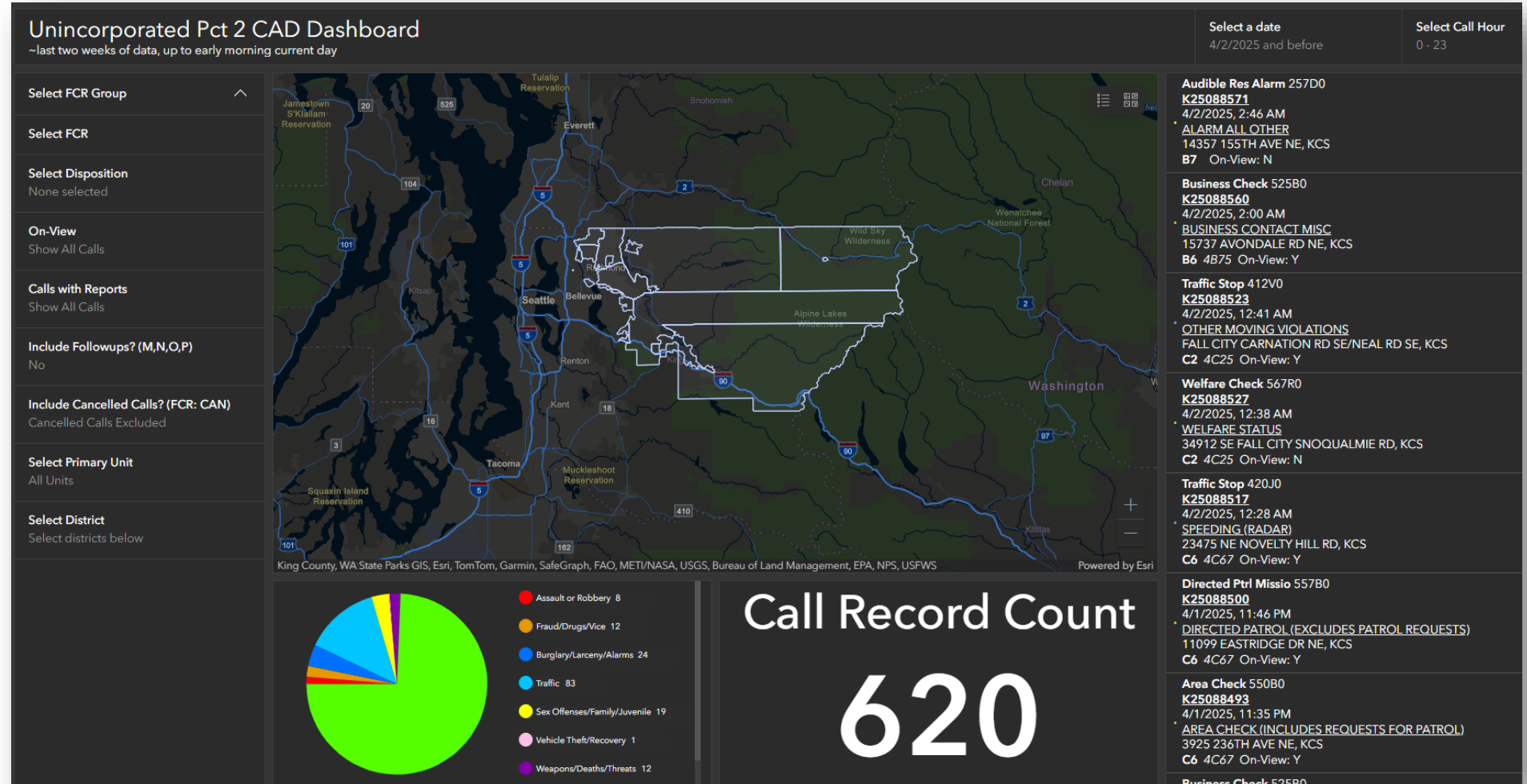
Reporting
Community
engagement



KCSO Photo Lab



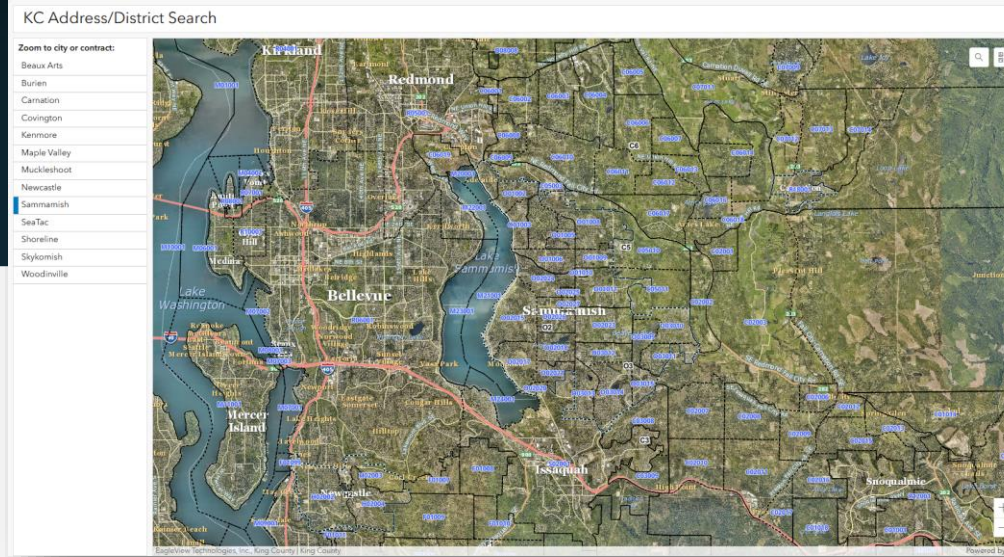
Public, Real Time Open Data Dashboards



05

Reporting
Community
engagement

Public, Real Time Open Data Dashboards

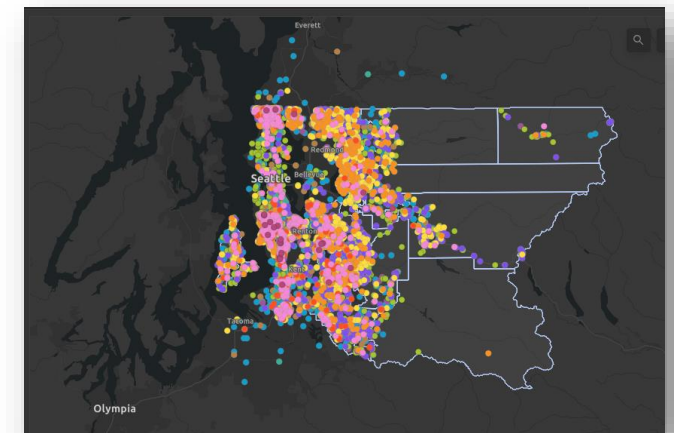
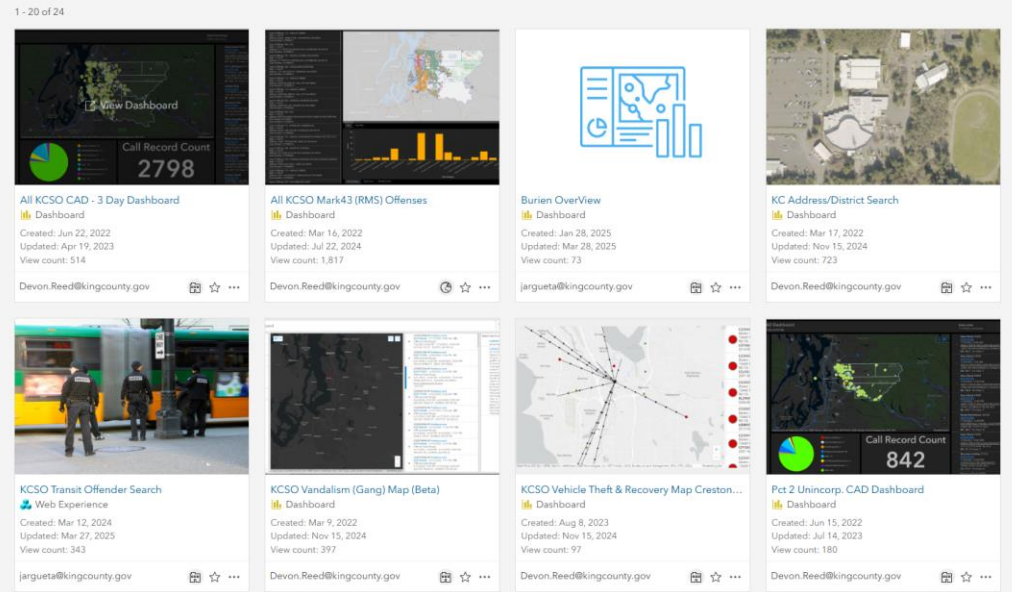


KCSO Photo Lab



Offenses

- Homicide Offenses
- Aggravated Assault Offenses
- Reckless Shooting/Weapons
- Burglary
- Fraud Offenses
- Larceny
- Robbery
- Sex/Vice Offenses
- Simple Aslt/Threats/Vandalism
- Vehicle Theft
- Other Offenses



05

Reporting
Community
engagement

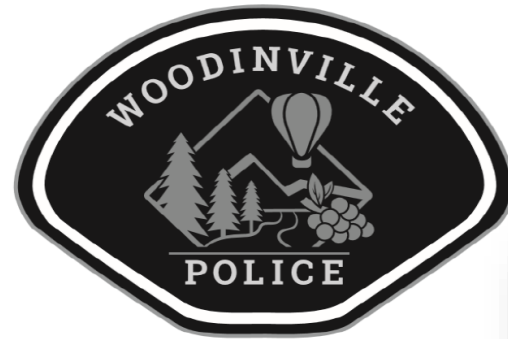


TAC-30 Marine Training



Sample Police Service Reports

CITY OF WOODINVILLE
ANNUAL POLICE SERVICE HIGHLIGHTS & DATA
2024



CITY OF SHORELINE
ANNUAL POLICE SERVICE REPORT
2024



CITY OF CARNATION
ANNUAL POLICE SERVICE HIGHLIGHTS & DATA
2024



05

Reporting
Community
engagement

NORTH BEND



Community
Engagement

North Bend Centered
KCSO Supported



Section 6 | Cost

North Bend (w/12 FTE's)

DRAFT Estimated Cost of Dedicated Police Dept (IF Started 1/1/2026)

Dedicated Police Services	FTE's	Total Cost
Police Chief	1.0	\$327,271
Officers	10.0	\$2,822,445
Detectives	1.0	\$289,410
<i>(The above includes an Interceptor SUV vehicle for each officer)</i>		
Subtotal, Dedicated Police Services		\$3,439,125
Additional Police Services	% of Cost Pools	Total Cost
Precinct Command Staff (Major)	4.31%	\$16,175
Precinct Command Staff (Captain)	4.31%	\$44,043
Patrol Supervision	4.31%	\$166,943
Communications/Dispatch	1.83%	\$257,128
Hostage Negotiation Team	0.00%	\$0
Major Crimes Investigation	1.68%	\$144,288
MARR Unit	1.99%	\$24,467
SWAT (TAC-30) Team	0.71%	\$8,064
Fire Investigation Unit	1.14%	\$4,399
Subtotal, Additional Police Services		\$665,507
Total Estimated Cost Exhibit (2025P Rate)		\$4,104,632
Assuming an inflator of 4-6% over 2025 =	x 1.04	x 1.06
Estimated Cost Exhibit (for 2026) =	\$4,268,817	\$4,350,910
Plus: Body-worn cameras =	\$43,680	\$44,520
Total Estimated cost for full year (in 2026) Incl. BWC's =	\$4,312,497	\$4,395,430
Plus: One-time, 9 month training cost of 12 officers =	\$1,220,411	\$1,220,411
Total Estimated cost for 2026 =	\$5,532,908	\$5,615,841
Estimated Costs for 2027:		
The 2026 cost exhibit (w/BWC's) =	\$4,312,497	\$4,395,430
Assuming an inflator of 4-6% over 2026 =	x 1.04	x 1.06
Estimated Exhibit Cost for 2027 =	\$4,484,997	\$4,659,156
Assuming an inflator of 4-6% over 2027 =	x 1.04	x 1.06
Estimated Exhibit Cost for 2028 =	\$4,664,397	\$4,938,705
Assuming an inflator of 4-6% over 2028 =	x 1.04	x 1.06
Estimated Exhibit Cost for 2029 =	\$4,850,973	\$5,235,027
Assuming an inflator of 4-6% over 2029 =	x 1.04	x 1.06
Estimated Exhibit Cost for 2030 =	\$5,045,012	\$5,549,129

Therapeutic Response Unit

4% - 6% Inflation Assumption
Through Year 2030

Year 2026 Includes
Initial 9-Month Training Costs.

To achieve predictable and control costs, select support services (TAC-30 / SWAT, Major Crimes, MARR, etc.) are apportioned over a three (3) year average workload.

Please see our **Contract Police Service Services Proposal** for full costing detail.

